



Robison Engineering Company, Inc.
846 Victorian Avenue, Suite 20
Sparks, Nevada, 89431
775-852-2251 Office
775-852-9736 Fax
<https://www.robisoneng.com>

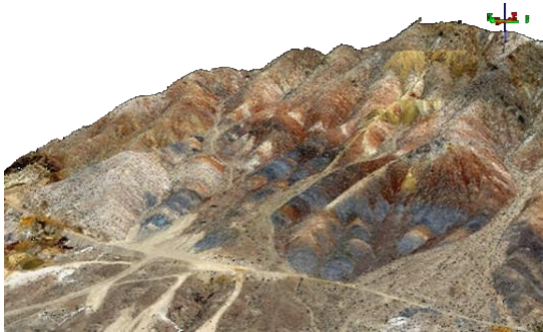


GENERAL STATEMENT OF QUALIFICATIONS

April 2018

COMPANY PROFILE

[Robison Engineering Company Inc.](#) is an employee-owned, responsibility-driven, multidisciplinary and technologically savvy firm dedicated to directly and personally serving our clients. We are licensed in NV, CA, ID, UT, CO, WA, NM, HI, NJ, FL, TX, Alberta, CDN, and nationwide for UAS photogrammetry. The Robison Engineering team thrives on the steep, remote, difficult and lonely.



UAS DATA – SMITH VALLEY, NV

Civil and Structural Engineering

- Due diligence, scoping, water rights, land management and GIS
- Municipal site improvements, compliance, and renovation planning
- Complete site, grading and utility plans
- Hydrologic, hydraulic, and water system design
- [Construction](#) management, inspection, testing and permitting, as-built & contractor support
- [Structural](#) design including commercial, and industrial/mining buildings and foundation design
- Large scale steel structures
- Residential structural design including specialized materials and building methods
- Welding training, certification, and inspection

Environmental Consulting Services

- Phase I, II, & III [Environmental](#) Site Assessments
- NEPA, BLM, & USFS permitting
- Weed control and revegetation
- [Air Quality](#) Permitting and Evaluation



ENTERPRISE DR. PARKING LOT, UNR

Land Surveying, Photogrammetry & UAS

- Survey & GIS Coordination with environmental, planning and engineering.
- Topographic and ALTA/ACSM [Land Surveying](#)
- Construction layout staking & certification
- [Water Rights Surveying](#)
- Record of Survey, Parcel Maps & Legals
- FAA-licensed Commercial Drone Pilots
- [Unmanned Aerial Survey](#) (DBA Robison UAS) – Regional leader in Unmanned Aerial Surveying (UAS) with our Sensefly eBee fixed-wing and DJI Mavic Pro quadcopter unmanned aerial vehicles, we provide precise 3d data, all in state plane coordinates accurately developed by a Land Surveyor. Down to 1.5” resolution orthophotos and ½-foot contours

IT Support (DBA [Sierra Nevada Systems](#))

- Custom database programming & training
- GIS & supply chain integration
- Control Systems design & services
- Level 2/Level 3 network planning & support



Robison Engineering Company, Inc.
846 Victorian Avenue, Suite 20
Sparks, Nevada, 89431
775-852-2251 Office
775-852-9736 Fax
<https://www.robisoneng.com>



CONTACT US

Please visit our website to [meet our team](#). Everyone is key in one discipline or another. Check us out on [Angie's List](#) or [Facebook](#) – we invite your investigation and you can call any of us, any time 775-852-2251.

Aaron Hoberg Senior Professional aaron@robisoneng.com , x713	Brittany Dougherty, EI Senior Professional brittany@robisoneng.com x712	Cassidy Reese, EI Project Professional cassidy@robisoneng.com , x720	Chris Baxter Crew Chief chris@robisoneng.com , x705
Christopher Ross, Ph.D. Senior Scientist cross@robisoneng.com , x707	Daniel Kelsoe, PLS, WRS Master Surveyor dan@robisoneng.com , x703	Elizabeth Heiles, PE Staff Engineer / Civil elizabeth@robisoneng.com x701	Eric Joslin, EI Secretary, Senior Professional eric.joslin@robisoneng.com , x709
Julianne Zotter, EI Sr. Enviro. Professional julianne@robisoneng.com , x710	Marcie Wood, CEM Sr. Enviro. Professional marcie@robisoneng.com , x724	Nathan Robison, PE, WRS President, Principle Engineer nathan@robisoneng.com , x700	Nich Maus Senior Inspector n.maus@robisoneng.com x721
Ralston Pedersen, EI Project Professional / Mining ralston@robisoneng.com , x717	Richard Phelps, LSIT Survey Professional rich@robisoneng.com x719	Ryan Sigler UAS Professional ryan@robisoneng.com , x706	Steve Porter Systems Integrator steve@robisoneng.com , x718
Tawni DePaoli, EI Treasurer, Project Professional tawni@robisoneng.com x715	TJ Prendergast, PE VP, Senior Professional tj@robisoneng.com , x716	Tony Kelsoe Crew Chief tony@robisoneng.com , x714	

SELECTED CLIENT & PROJECT REFERENCES

University of Nevada, Reno – Reno, NV – Dean Hitchcock – (775) 682-7223 - dhitchcock@unr.edu

DF Altmann – Fernley & Sparks, NV – Trudi Linsey – (775) 852-7887 x 501 - trudi@dfaltmann.com

Coeur-Rochester, Inc. – Rochester Mine - Casey Kiel – (775) 273-7995 x 1823 - ckiel@coeur.com

Nevada Cement – Ben Bufmack – (775) 575-2281 - bbufmack@nevadacement.com

Tahoe Pyramid Bike Trail – Janet Phillips, PE – (775) 825-9868 - tahoepyramidbike@aol.com

Sky Tavern Ski Resort – Mt. Rose - Bill Henderson – (775) 323-5125 - bill.henderson@skytavern.com

Beyond Construction – Dusty Simonian – (775) 691-7286 - beyondconstruction775@gmail.com

Premier Restoration and Remodel – Tim Jeter – (775) 324-2929 - tim@prrnv.com

A&K Earthmovers – Steve Sydenham – (775) 997-7232 - ssydenham@akearthmovers.com

Simerson Construction – Dru Simerson – (775) 883-3133 – dru@simersonusa.com