



Robison Engineering Company, Inc.
846 Victorian Avenue, Suite 20
Sparks, Nevada, 89431
775-852-2251 Office
775-852-9736 Fax
<https://www.robisoneng.com>

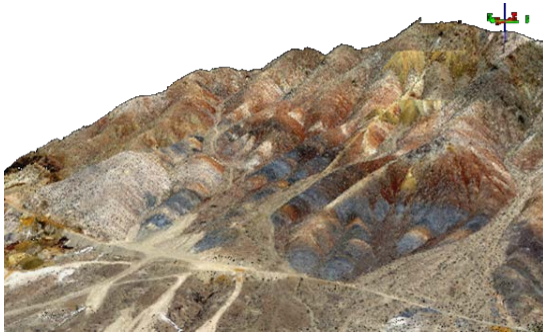


GENERAL STATEMENT OF QUALIFICATIONS

June 2018

COMPANY PROFILE

[Robison Engineering Company Inc.](#) is an employee-owned, responsibility-driven, multidisciplinary and technologically savvy firm dedicated to directly and personally serving our clients. We are licensed in NV, CA, ID, UT, CO, WA, NM, HI, NJ, FL, TX, Alberta, CDN, and nationwide for UAS photogrammetry. The Robison Engineering team thrives on the steep, remote, difficult and lonely.



UAS DATA – SMITH VALLEY, NV

Civil and Structural Engineering

- Due diligence, scoping, water rights, land management and GIS
- Municipal site improvements, compliance, and renovation planning and permitting
- Complete site, grading and utility plans
- Hydrologic, hydraulic, and water system design
- [Construction](#) management, inspection, testing and permitting, as-built & contractor support
- [Structural](#) design including commercial, and industrial/mining buildings and foundation design
- Large scale steel structures
- Residential structural design including specialized materials and building methods
- Welding training, certification, and inspection

Environmental Consulting Services

- Phase I, II, & III [Environmental](#) Site Assessments
- NEPA, BLM, & USFS permitting
- Weed control and revegetation
- [Air Quality](#) Permitting and Evaluation



ENTERPRISE DR. PARKING LOT, UNR

Land Surveying, Photogrammetry & UAS

- Survey & GIS Coordination with environmental, planning and engineering.
- Topographic and ALTA/ACSM [Land Surveying](#)
- Construction layout staking & certification
- [Water Rights Surveying](#)
- Record of Survey, Parcel Maps & Legals
- FAA-licensed Commercial Drone Pilots
- [Unmanned Aerial Survey](#) (DBA Robison UAS) – Regional leader in Unmanned Aerial Surveying (UAS) with our Sensefly eBee fixed-wing and DJI Mavic Pro quadcopter unmanned aerial vehicles, we provide precise 3d data, all in state plane coordinates accurately determined by a Land Surveyor, refinable to 1.5" resolution orthophotos and ½-foot contours depending on conditions

IT Support (DBA [Sierra Nevada Systems](#))

- Custom database programming & training
- GIS & supply chain integration
- Control Systems design & services
- Level 2/Level 3 network planning & support



Robison Engineering Company, Inc.
846 Victorian Avenue, Suite 20
Sparks, Nevada, 89431
775-852-2251 Office
775-852-9736 Fax
<https://www.robisoneng.com>



CONTACT US

Please visit our website to [meet our team](#). Everyone is key in one discipline or another. Check us out on [Angie's List](#) or [Facebook](#) – we invite your investigation and you can call any of us, any time 775-852-2251 – use extension “0” to ring the sparsely populated HQ, or to leave a message which we will all receive.

Aaron Hoberg
Senior Professional
aaron@robisoneng.com, x713

Andrea Roegiers
Technician
andrea@robisoneng.com x726

Cassidy Reese, EI
Project Professional
cassidy@robisoneng.com, x720

Chris Baxter
Crew Chief
chris@robisoneng.com, x705

Christopher Ross, Ph.D.
Senior Scientist
cross@robisoneng.com, x707

Daniel Kelsoe, PLS, WRS
Master Surveyor
dan@robisoneng.com, x703

Elizabeth Heiles, PE
Staff Engineer / Civil
elizabeth@robisoneng.com x701

Eric Joslin, EI
Secretary, Senior Professional
eric.joslin@robisoneng.com, x709

Julianne Zotter, PE, CEM
Sr. Enviro. Professional
julianne@robisoneng.com, x710

Marcie Wood, CEM
Sr. Enviro. Professional
marcie@robisoneng.com, x724

Nathan Robison, PE, WRS
President, Principle Engineer
nathan@robisoneng.com, x700

Nich Maus
Senior Inspector
n.maus@robisoneng.com x721

Ralston Pedersen, EI
Project Professional / Mining
ralston@robisoneng.com, x717

Richard Phelps, LSIT
Survey Professional
rich@robisoneng.com x719

Ryan Sigler
UAS Professional
ryan@robisoneng.com, x706

Steve Porter
Systems Integrator
steve@robisoneng.com, x718

TJ Prendergast, PE
VP, Senior Professional
tj@robisoneng.com, x716

Tony Kelsoe
Crew Chief
tony@robisoneng.com, x714

Victoria Jackson
Technician
victoria@robisoneng.com x 723

SELECTED CLIENT & PROJECT REFERENCES

University of Nevada, Reno – Reno, NV – Dean Hitchcock – (775) 682-7223 - dhitchcock@unr.edu

DF Altmann – Fernley & Sparks, NV – Trudi Linsey – (775) 852-7887 x 501 - trudi@dfaltmann.com

Coeur-Rochester, Inc. – Rochester Mine - Casey Kiel – (775) 273-7995 x 1823 - ckiel@coeur.com

Nevada Cement – Ben Bufmack – (775) 575-2281 - bbufmack@nevadacement.com

Tahoe Pyramid Bike Trail – Janet Phillips, PE – (775) 825-9868 - tahoepyramidbike@aol.com

Sky Tavern Ski Resort – Mt. Rose - Bill Henderson – (775) 323-5125 - bill.henderson@skytavern.com

Beyond Construction – Dusty Simonian – (775) 691-7286 - beyondconstruction775@gmail.com

Premier Restoration and Remodel – Tim Jeter – (775) 324-2929 - tim@prrnv.com

A&K Earthmovers – Steve Sydenham – (775) 997-7232 - ssydenham@akearthmovers.com

Simerson Construction – Dru Simerson – (775) 883-3133 – dru@simersonusa.com